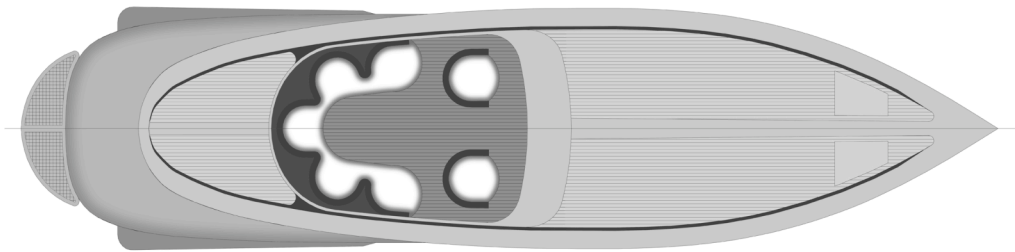
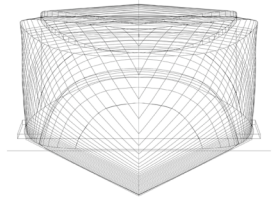
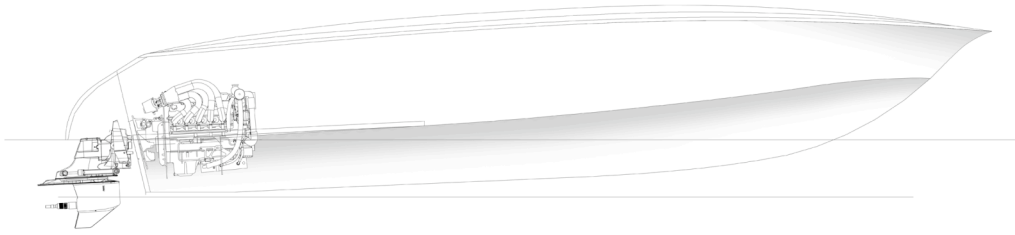


WALTER
custombuild

900



LOA: 9.00 mtr
 BOA: 2.35 mtr

Short Specs

Loa	9.56 mtr	Engine	Mercruiser 496 MAG, 280kW, V8 with <i>SmartCraft</i>
Boa	2.35 mtr	Propulsion	Mercruiser Bravo 3 Dual prop.
Displacement	Ca. 2.000Kg	Max. Speed	Ca. 58kn // 107 km/h
Hull material	Sipo Mahonie	Fuel capacity	250 ltr
Paint	Stoppani	Fresh water	100 ltr.
		CE normering	C